

Description



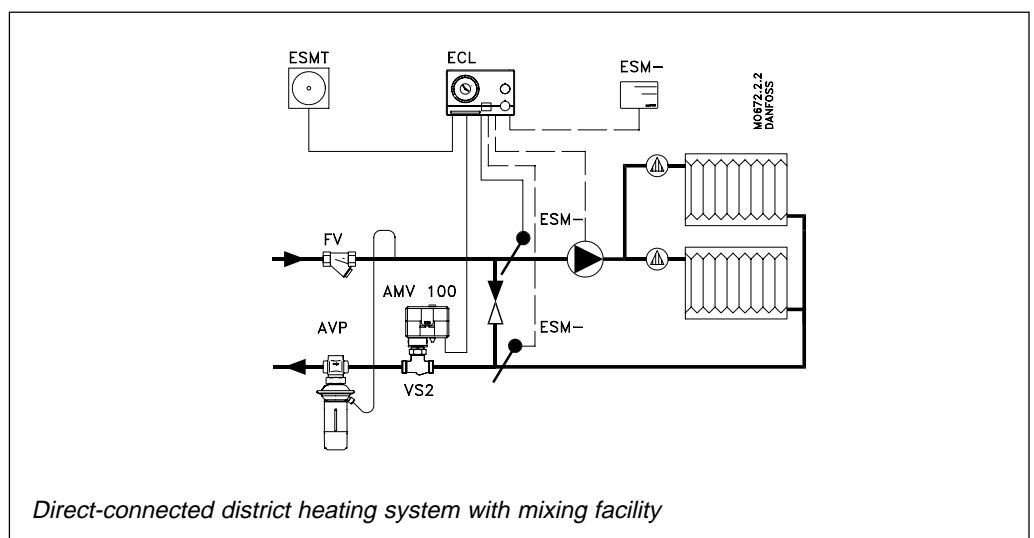
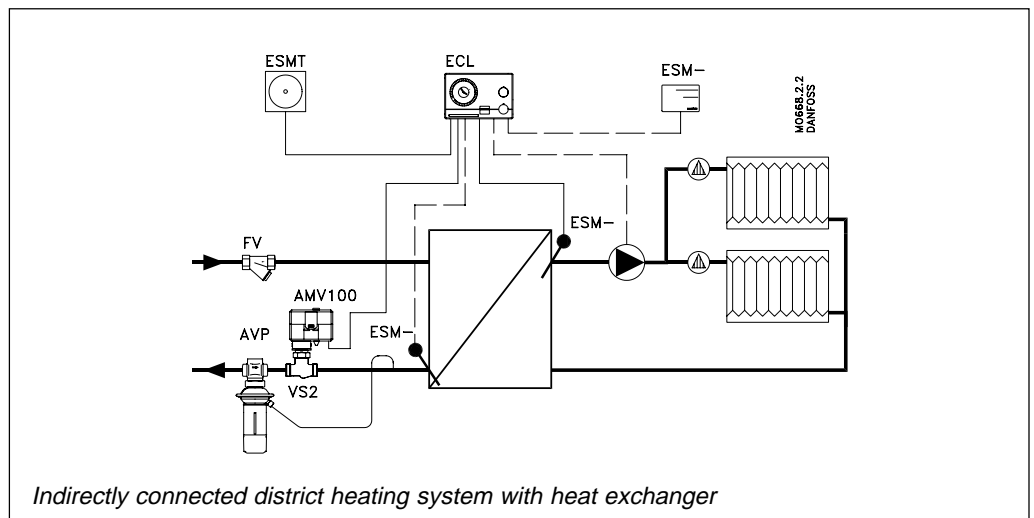
AMV 100 is used together with seated valve VS2 DN 15 in district heating systems or with 3-way seated valve VMV. The seated valves have threads for motor fitting M30 x 1.5.

The actuator AMV 100 is available for the Danfoss ECL and EPU or any other 3-point controls.

Main data:

- speed 90 s/mm
- 230/240 V~ and 24 V ~
- built-in manual operation.

Principles



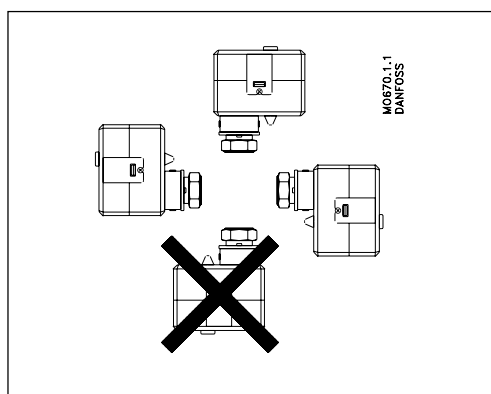
Ordering

Type	Supply voltage	Spindle speed	Control mode	Code No.
AMV 100	24 V~	90 s/mm	3-point	082G1062
AMV 100	230 V~	90 s/mm	3-point	082G1063

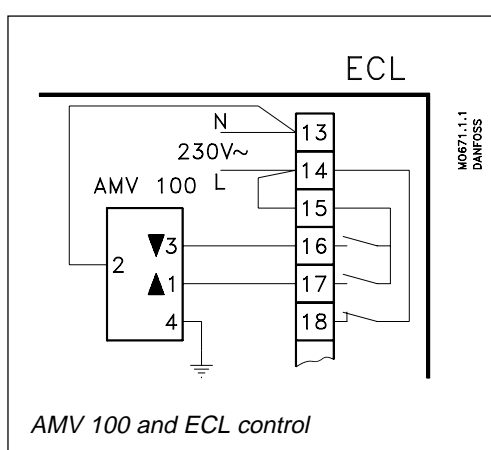
Data

Supply voltage	24 V \pm 10% 230 - 240 V +6 to -10%
Power consumption	1.5 VA
Frequency	50 Hz
Control voltage	3-point
Cable	2 m, 4 x 0.75 mm ²
Power output	300 N
Spindle travel	4 mm
Spindle speed	90 s/mm
Enclosure	IP 40
Ambient temperature	-15 to +50 C
Storage and transport temperature	-40 to +70 C
Weight	0.55 kg
CE - marking in accordance with the standards	EMC- Directive 89/336/EEC, 92/31/EEC, 93/68/EEC, EN 50081-1 and EN 50082-1 Low Voltage Directive 73/23/EEC and 93/68/EEC, EN 60730/2/14

Mounting

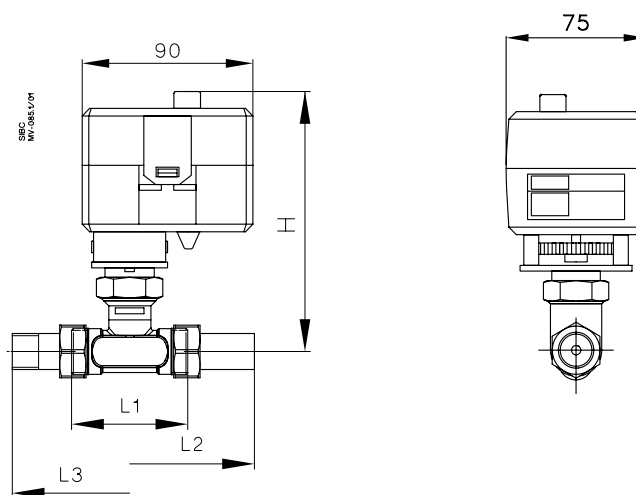


Wiring



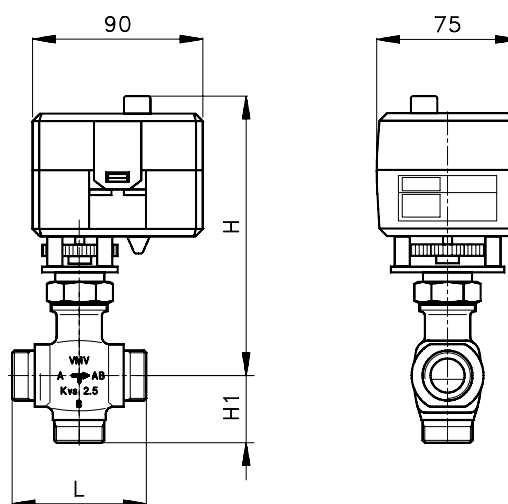
Dimensions

AMV 100 and VS2



Type	L ₁ m	L ₂ mm	L ₃ mm	H mm
VS2 15	65	139	131	140

AMV 100 and VMV



M0786.1.1
DANFOSS

Type	L mm	H ₁ mm	H mm
VMV 15	70	35	160
VMV 20	80	40	160
VMV 25	90	45	165
VMV 32	105	50	170
VMV 40	120	60	175

Danfoss can accept no responsibility for possible errors in catalogues, brochures and other printed material. Danfoss reserves the right to alter its products without notice. This also applies to products already on order provided that such alterations can be made without subsequential changes being necessary in specifications already agreed. All trademarks in this material are property of the respective companies. Danfoss and the Danfoss logotype are trademarks of Danfoss A/S. All rights reserved.

